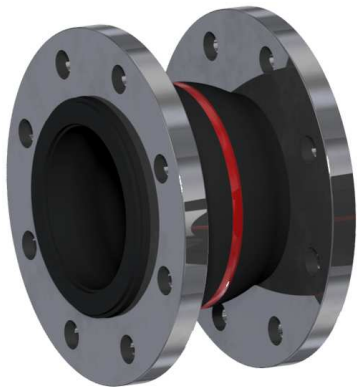


## Data Sheet – Type RBS

### **Moulded Rubber Bellows – Type RBS**

Moulded Rubber Bellows are designed to compensate for misalignment, neutralise movement and reduce noise and vibration in pipelines. They effectively dampen the transmission of sound and vibration from plant items in building service installations, and can be used for many applications including water, oils, chemicals, gases and in the food industry depending upon the grade of the rubber (please see Material Colour Chart below).

They are available from 25mm nb to 600mm nb (1"nb to 24"nb) and generally come complete with zinc plated carbon steel swivel backing flanges. They can be drilled to suit any table or special drillings and can be supplied either Tied or Untied.



*Type RBS with swivel flanges*



*Type RBS with tie rods, nuts & rubber washers*

### **Standard Construction**

- Nylon reinforced rubber body with steel reinforced collar.
- Single arch
- Zinc plated carbon steel flanges

### **Options**

- Different grades of rubber
- Different lengths
- Untied or Tied flanges
- Flanges drilled to any table / special drilling
- Carbon steel, Stainless steel or Alloy flanges
- Supplied with or without vacuum support ring

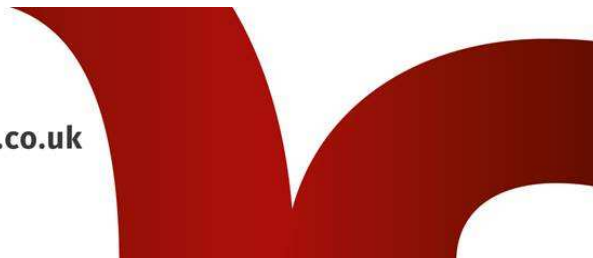
### **Vacuum Rating:**

Where negative pressures occur or vacuum conditions exist it is recommended that vacuum support rings be used. These enhance the strength of the rubber bellows. Vacuum support rings (anti-vac rings) are made from sprung stainless steel, and are retrofitted inside the arch of the bellows before despatch.

Moulded Rubber Bellows must be securely anchored & adequately guided to ensure their correct performance. Omitting anchors & guides may result in failure of the system. All Quick-Steel Ltd products should be installed in accordance with our fitting instructions.

### **Data Sheets – Type RBS**

11 Dalton Way, Midpoint 18, Middlewich, Cheshire CW10 OHU  
Tel: 01606 862225 Fax: 01606 593539 Email: [sales@quicksteelltd.co.uk](mailto:sales@quicksteelltd.co.uk) Website: [www.quicksteelltd.co.uk](http://www.quicksteelltd.co.uk)  
Company Registration No. 4702194 VAT Registration No. 811 9492 25



**Movement data:**

Nominal Bore (NB)		Standard Lengths		Alternative Length	Working Pressure	MOVEMENTS			
						Axial (mm)		Lateral (+/-)	Angular (+/-)
mm	Ins	mm		mm	Bar	Compression	Elongation	mm	deg
25	1	130	150	95	16	13	9	13	15
32	1¼	130	150	95	16	13	9	13	15
40	1½	130	150	95	16	13	9	13	15
50	2	130	150	105	16	13	9	13	15
65	2½	130	150	115	16	13	9	13	15
80	3	130	150	-	16	13	9	13	15
100	4	130	150	-	16	13	9	13	15
125	5	130	150	170	16	13	9	13	15
150	6	130	150	180	16	13	9	13	15
200	8	130	150	205	16	13	9	13	15
250	10	130	200	-	16	13	9	13	15
300	12	130	200	-	16	13	9	13	15
350	14	-	200	-	10	15	10	20	10
400	16	-	200	-	10	15	10	20	10
450	18	-	200	-	10	15	10	20	8
500	20	-	200	-	10	15	10	20	6
600	24	-	200	-	10	15	10	20	6

Material Colour Chart			
Colour	Material	Main Applications	Max Temp °C
Red	EPDM	Hot water, heating & ventilation systems, weak acids & alkalis	90
Double Red	EPDM	High temperature hot water, heating & ventilation systems, weak acids & alkalis.	130
Yellow	Nitrile	Oil & gas transportation, refineries	80
Green	Hypalon	Water, Good chemical resistant qualities for acids	90
Purple	Viton	High temp applications, transportation of products derived from petroleum / chemicals / oils / solvents	130
White	Food Grade Nitrile	Transportation of food stuffs, potable water distribution	80
Blue	Butyl HT	High temperature	110

Moulded Rubber Bellows must be securely anchored & adequately guided to ensure their correct performance. Omitting anchors & guides may result in failure of the system. All Quick-Steel Ltd products should be installed in accordance with our fitting instructions.

**Data Sheets – Type RBS**

11 Dalton Way, Midpoint 18, Middlewich, Cheshire CW10 OHU  
Tel: 01606 862225 Fax: 01606 593539 Email: [sales@quicksteelltd.co.uk](mailto:sales@quicksteelltd.co.uk) Website: [www.quicksteelltd.co.uk](http://www.quicksteelltd.co.uk)  
Company Registration No. 4702194 VAT Registration No. 811 9492 25

